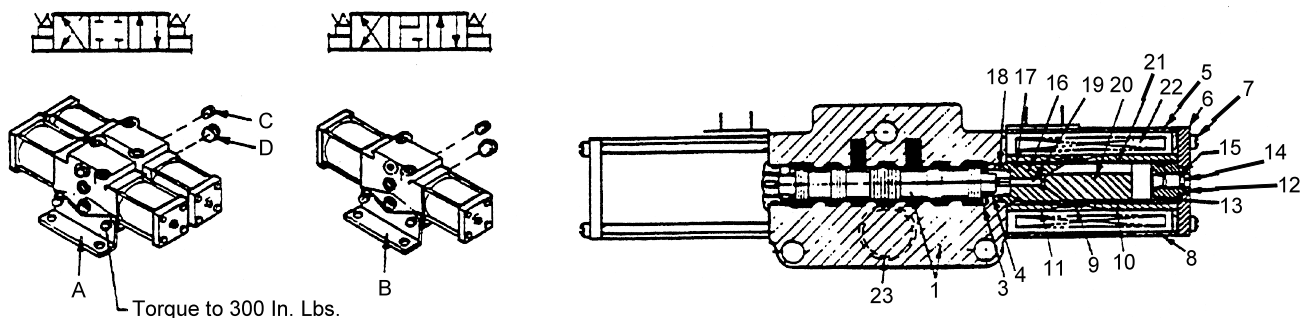


# 708 2210



REF	PART NO.	DESCRIPTION	QTY
A	708 2210	Valve Ass'y .....	2
	29475	Section .....	4
	205149	Kit, Mounting .....	2
B	708 2211	Valve Ass'y .....	1
	29476	Section .....	1
	200900	Kit, Mounting .....	1
C	1219-860	Plug w/O-Ring .....	3
	1218-144	O-Ring .....	3
D	1219-624	Plug w/O-Ring .....	3
	1218-34	O-Ring .....	3
	A29309	Kit, Seal .....	5
		(Includes Items marked with Asterisk * for one section)	

Quantities for Items 1 thru 23 for one section

1		Body & Spool Ass'y .....	1
3	26841	Washer .....	1
4	29620	Spring .....	1
5	26843	Solenoid, Less Coil .....	1
		(Incl. Items 6 thru 21)	
6	26808	Plate, End .....	2
7	29595	Screw .....	8
8	29596	Case .....	2
9	26802	Spring .....	2
10	29597	Sleeve, Outer .....	2
11	29598	Sleeve, Inner .....	2
12	29599	Guide, Push Pin .....	2
13	* 29311	O-Ring .....	2
14	29624	Pin, Push .....	2
15	* 29310	Ring, Quad .....	2
16	29602	Cone, Female .....	2
17	* 29311	O-Ring .....	2
18	* 29312	O-Ring .....	2
19	29603	Pin, Push .....	2
20	29605	Plunger .....	2
21	29607	Tube, Guide .....	2
22	24263	Coil .....	2
23	23291	O-Ring .....	1
	29627	O-Ring .....	1

WHEN ORDERING PARTS, SPECIFY MODEL NUMBER, SERIAL NUMBER AND DESCRIPTION OF PART REQUIRED

**TEREX**  **CRANES**

**OUTRIGGER VALVE**  
Selector

DATE: Issued 7-2003

MODEL: RT500-1

PAGE 3.5

GROUP

**3**